

PARK SQUARE  
THEATRE



STEPPINGSTONE  
CHILDREN'S LEARNING

# THE SNOWY DAY

**And Other Stories By Ezra Jack Keats**

**DEC 2 – 23**

*Celebrate the joy of the seasons through a child's eyes!*



# SPRING Magic

MONDAY APRIL 3

**You're Invited!**

Reserve your spot today  
at [parksquaretheatre.org](http://parksquaretheatre.org)

**REGISTRATION IS NOW OPEN!**

## STORYTELLING CLASSES FOR ADULTS!

**Classes Start in January!**

**All Classes are Pay-As-You're-Able**

### OFFERINGS INCLUDES:

**CONNECTING THROUGH STORYTELLING • HONING YOUR CRAFT • FINDING, CRAFTING, AND TELLING YOUR STORY • THE POWER OF STORY • ACTING FOR ADULTS**

[parksquaretheatre.org/education/classes-for-adults](http://parksquaretheatre.org/education/classes-for-adults)



# WELCOME FRIENDS,

The school library at Zanewood Elementary was a place to let your imagination run. I remember my first visit with Mrs. Whalen, my Kindergarten teacher, and being told that ALL the books on the lower shelves were ours. We could check them out, hold them close while propped on the pillow pile, and find adventures in a new world of written stories. There were many of those “lower shelf books” that became childhood obsessions (it happens with books as it does with movies or songs), and some that resonate even today in my mind.

I don't recall being aware that Peter, in his red snowsuit, had skin that looked different from mine. **It was a big deal when the book was published 60 years ago and is worth celebrating today.** But I do recall connecting with a story that was familiar to a Minnesota boy—the wonder of a snowy day. Each new snow was different because I was also a little different: new words, new understandings, new abilities to climb and throw and build. It's easy to forget how big those changes feel to a small person.

**Welcome to our first SteppingStone Youth and Family production at Park Square.** We hope this space we create for youth and adults is a place that inspires wonder and imagination. You will notice that young artists are at work on stage and off with this production. This is an important value we embrace at Park Square: Young people (and indeed, all people) are artists, makers and doers. And when they make art to share with the world we all are changed for the better.

**For 60 years, multiple generations, *The Snowy Day* has inspired our hearts.** So, let's re-enter the world of Peter. And wonder and grow and find ourselves leaving just a little bit different than we started the day.



**MARK FERRARO-HAUCK**

*Executive Director, Park Square Theatre*

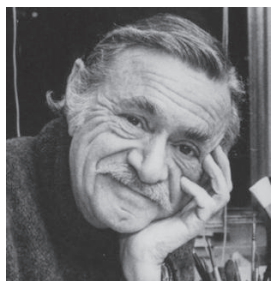
[hauck@parksquaretheatre.org](mailto:hauck@parksquaretheatre.org)



Park Square Theatre celebrates our community's many voices, inspires creativity across generations, and ignites our shared sense of belonging, exploration, generosity, and self-reflection.

## SYNOPSIS

The wonder of a fresh snowfall, the delight of whistling for the first time, the awe in finding a special treasure comes to life in *The Snowy Day* and *Other Stories* by Ezra Jack Keats. This story celebrates the joy of the seasons through a child's eyes



**Ezra Jack Keats** was an illustrator and author of many books for children. Keats was one of the first authors of children's books to feature African American children as main characters.

Keats was born on March 11, 1916, in Brooklyn, New York. He started drawing as a child and won prizes for his art in school. He had to work instead of going to college, but he took art classes when he could.

Keats served in the Army during World War II. Afterward he returned to New York and worked as an illustrator for several magazines. In 1954 he drew his first illustrations for a children's book. The book was *Jubilant for Sure* by Elizabeth Lansing. In 1960 he began writing books as well. His first effort was *My Dog Is Lost*. He wrote the book with Pat Cherr.

In 1962 Keats wrote and illustrated *The Snowy Day*. Like many of his books it features illustrations made out of colorful pieces of paper combined with paint. It won a Caldecott Medal for the best picture book for children. It was also translated into several other languages and made into a short movie. The main character in *The Snowy Day* is an African American boy named Peter. Peter appears in several other books by Keats as well, including *Whistle for Willie* (1964), *A Letter to Amy* (1968), and *Goggles!* (1969). Keats also wrote some 20 other books and illustrated many more.

Keats died on May 6, 1983, in New York City. In 1985 the New York Public Library helped establish the Ezra Jack Keats Book Award. It is given every year to honor new writers and illustrators of children's books.

**Learn more at [ezra-jack-keats.org](http://ezra-jack-keats.org)**

---

*The Snowy Day* was originally produced by the Children's Theatre Company in 2016

*The license issued in connection with PYA perusal scripts is a limited license, and is issued for the sole purpose of reviewing the script for a potential future performance. All other rights regarding perusal scripts are expressly reserved by Plays for Young Audiences, including, but not limited to, the rights to distribute, perform, copy or alter scripts. This limited license does not convey any performance rights of any kind with this material. By accepting any perusal script(s), Licensee agrees to and is bound by these terms.*

# THE SNOWY DAY

## And Other Stories By Ezra Jack Keats

### CAST

Maje Adams.....	Male Player
Jaeden Allen .....	Youth Ensemble
Latanya Boone .....	Female Player
Joe Charley.....	Peter
Sophie Dannersmith .....	Youth Ensemble
Nyla Spika .....	Youth Ensemble
Jas Wade.....	Youth Ensemble
Mason Yang.....	Youth Ensemble

### CREATIVE TEAM

Ansa Akyea* .....	Director
Mikell Sapp* .....	Assistant Director
Dane Stauffer .....	Music Coach
Erik M.C. Gonzalez .....	Composer
Mark Ferraro-Hauck .....	Set Designer
Jeni Raddatz-Tolifson .....	Assistant Scenic Director
Maxwell Collyard .....	Projections Designer
Joe Burch.....	Costume Designer
Anita Kelling.....	Sound Designer
Mikayla Paul .....	Lighting Designer
Tyler Stamm .....	Properties Designer
Pete Talbot & Amm-Ra Seka .....	Puppet Designer
Hannah Mahr .....	Movement Director
Jaya Robillard.....	Stage Manager
Olivia Nyman .....	Assistant Stage Manager

**Performance Time:** 45 minutes with no intermission

---

**The video and audio recording of this performance  
by any means is strictly prohibited.**

\*Member of Actors' Equity Association, the Union of Professional Actors and Stage Managers in the United States.  
Park Square Theatre is a member of Theatre Communications Group (TCG), the national organization for the American theatre.

# CAST



## MAJE ADAMS

(he/they) **Male Player**

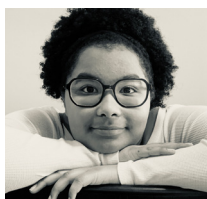
**Park Square Debut Representative Theatre**

Frank Theatre: *The Convert*; Skylark Opera Theatre:

*Amahl & The Night Visitors*; Yellow Tree

Theatre: *Passing Strange* **More At**

@majeadam; themanyvoicedgod.com



## JAEDEN ALLEN

(she/her)

**Youth Ensemble**

**Park Square** with

SteppingStone Theatre:

*Jimmy De Los Rosas*

**Representative**

Theatre Rosetown Playhouse: *Cinderella*, Bethel University: *The Music Man*



## LATANYA BOONE

**Female Player**

**Park Square Debut**

**Representative**

Theatre Wonderlust Productions: *Labyrinth* & *The Minotaur*;

Fearless Comedy Productions: *Wilhelmina* & *Theodore's Exquisite Victorian Adventure*;

Penumbra Theatre: *Awake* **Awards/**

**Other** Ordway's GreenRoom 2022 Fellow

**Training** B.A., Music & Theater, Hamline

University; B.S., Environmental Science

and Management, University of Minnesota



## JOE CHARLEY

(he/him) **Peter**

**Park Square** With

SteppingStone Theatre:

*Almost to Freedom*

**Representative**

**Theatre** Great

Children's Theatre: *Ragtime*; LA Kid's

Playhouse: *Little Bear*; Stages Theatre

Company: *Holes*; London Artist Collective:

*Frog and Toad*; Ballet MN: *The Nutcracker*;

Children's Theatre of Atlanta: *Black*

*Nativity* **TV/Film** *The John Turnipseed*

*Movie*; *Boys Cry*; *For You* **Awards/Other**

6 parksquaretheatre.org / 651.291.7005

Teen Ink Editor's Choice Award (2012); Poetry Out Loud National Poetry Recitation Competition Third in MN State (2013); Outstanding Member, Normandale Student Leadership Awards (2017) **Training** HS Diploma, Theatre Endorsement, Main Street School of Performing Arts; A.A, Liberal Arts, Normandale Community College; B.S, Accounting and Business Management, Metropolitan State University **Upcoming Projects** *B.A.M.B.I* (EP), December 2022 worldwide release; *The Joe Show Tour* across the Midwest USA, Spring 2023; Headlining the 2nd Biannual Juneteenth Celebration at Phelps Park with the Mpls Park Board and Southside Boys and Girls Club, Summer 2023 **More at** facebook.com/theejoecharley



## SOPHIE

**DANNERSMITH**

(she/her)

**Youth Ensemble**

**Park Square Debut**

**Representative**

**Theatre** Lundstrum

performing arts: *Descendants*, *Bye Bye Birdie*, *Oklahoma*, *Legally Blonde*

**Awards/Other** 2nd place finalist

in musical theater at the 2022

National Association of Teachers

of Singing competition **Training**

Broadway Arts Conservatory at

Lundstrum Performing Arts



## NYLA SPIKA

(she/her)

**Youth Ensemble**

**Park Square Debut**

**Representative**

**Theatre** Youth

Performance

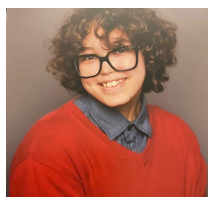
Company: *Percy Jackson and the*

*Lightning Thief*, Twin Cities Theater

Camp: *The Logic Pit* **Upcoming**

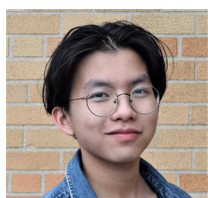
**Projects** Saint Paul Conservatory

for Performing Artists: *Ragtime*



**JAS WADE**  
(he/him/it/its)  
**Youth Ensemble**  
**Park Square** *The Purple Cloud*, *Annie Nate The Great*  
With Theatre

Mu: *The Last Firefly*, *A Midsummer Night's Dream*, *Gulliver's Travels*, *Alice In Wonderland* **Representative Theatre** Under Construction: *Romeo And Juliet*; Gremlin Theater: *Men On Boats*; Mixed Blood Theatre: *Renascence* **Upcoming Projects** Under Construction: *Alice In Wonderland*



**MASON YANG**  
(he/they)  
**Youth Ensemble**  
**Park Square** Debut  
**Representative Theatre** Children's  
Theatre Company:

*Diary of a Wimpy Kid the Musical*; Youth Performance Company: *The Lightning Thief: The Percy Jackson Musical* **Training** Musical Theatre Track, SPCPA



**ANSA AKYEA\***  
(he/him) **Director**  
**Park Square**  
*Mufaro's Beautiful Daughters*, *King Lear*, *Great expectations*, *Cardboard Piano*,

*Ruby!* **Representative Theatre** Guthrie Theatre: *Sweat*; Ten Thousand Things : *Othello*; Mixed Blood Theater: *The Elaborate Entrance of Chad Deity*; Children's Theatre Company: *Shrek* **TV/Film** *Bitcon* (film), *Memorial Day* (film), *Into Temptation* (film), *In An Instant* (ABCTV) **Awards/Other** TCG- Fox Fellow, PWC- McKnight Fellow **Training** MFA, theater arts, University of Iowa , MA, African American World Studies University of Iowa **Upcoming Projects** *Mlima's Tale*, *Ten Thousand Things*

**MIKELL SAPP\*** (he/him)  
**Assistant Director**  
**Park Square** *The Agitators*  
**Representative Theatre** Pillsbury Theatre: *Charlie Black*; Yellow Tree Theatre: *Skeleton Crew*; Theatre Mu: *Hot Asian Doctor Husband*; Penumbra Theatre: *The Ballad of Emmett Till*; Children's Theatre Company: *The Snowy Day*; Pillsbury Theatre: *Broke-Ology* **Awards/Other** Ivey Award- 2015 Emerging Artist **Training** B.A., Theatre Arts, Alabama State University **Upcoming Projects** History Theatre: *Diesel Heart*

**DANE STAUFFER** **Music Coach**  
**Park Square** Storytelling Coach  
**Representative Theatre** Ordway: *Brand New Day: Breaking Barriers/A Cabaret*; *Dolly Parton's Smokey Mountain Christmas Carol*; History Theater: *Glensheen* **Awards** *Triple Espresso*: Best Actor in a comedy; *All in the Timing*: LA Stage Scene; *Glensheen*: Best Actor in a Musical (Broadway World) **Upcoming Projects** Coaching Storytelling Classes for Adults at Park Square Theatre  
**More at** [danestauffer.com/](http://danestauffer.com/)

**ERIK M.C. GONZALEZ** **Composer**  
**Park Square** *Airness* **Representative Theatre** Macalester College: *Angels In America*; Pangea World Theater: *Sueño*; Cleveland Public Theatre: *44 Plays For 44 Presidents*; Zeitgeist: *Inaugural Sounding Ground* **Composer In Residence**; Arts Letters & Numbers: *Artist In Residence*; Cleveland Public Theatre: *Kulas Composer Fellow* **TV/Film** Rhode Island Network Project; TPT: *Art Is* **Training** B.M., Composition and Cello Performance, Cleveland State University

**MARK FERRARO-  
HAUCK** **Set Designer**

**Park Square** With SteppingStone Theatre: Artistic and Executive Director **Representative Theatre** (as BFA Actor Training Program Guest Director) Guthrie Theatre, (as

## CREATIVE TEAM

Artistic Director) The Public Theatre of Minnesota **Training** University of Minnesota, Regis University

### JENI RADDATZ-TOLIFSON

**Assistant Scenic Designer**

**Park Square** *Hedwig and the Angry Inch; Pride and Prejudice* **Representative Theatre** Jungle Theater: *Little Women, The Wickhams, The Children, The Wolves, School Girls, Small Mouth Sounds, Stinkers, Ride the Cyclone, Miss Bennet, A Doll's House, Part 2* Theater Latté Da: *Hedwig and the Angry Inch, Bernarda Alba, A Little Night Music* Artistry: *The Bridges of Madison County, Victor Victoria*; various productions at Mixed Blood Theater, Yellowtree Theater, and Lyric Arts **Training** **Denver Center Theater Company**

### MAXWELL COLLYARD

(they/them) **Projections Designer**

**Park Square** As Actor: *Sons of the Prophet, Romeo and Juliet, Dot; Great Expectations* (as assistant director), *Face to Face* (as projection designer), *Aubergine* (as assistant projection designer) **Representative Theatre** Many productions around the twin cities as an performer, projection designer, and director

### JOE SAMUEL BURCH III

(he/him) **Costume Designer**

**Park Square** *The Humans, Holmes & Watson* (as covid compliance officer) **Representative Theatre** Ordway Center for Performing Arts: *Beauty and the Beast*, Penumbra Theatre: *Weathering*, Artistry Theatre & Visual Arts: *Memphis*, Buffalo Community Theatre: *Junie B. Jones JR* (as props designer), Dillard University Players: *The Skin of Our Teeth* **Training** B. A. Theatre Technology, Dillard University **Upcoming Projects** Pillsbury House Theatre: *Bull-Jean*, Ten Thousand Things Theater Company: *Mlima's Tale* **More At** [bit.ly/jb3portfolio](http://bit.ly/jb3portfolio)

**ANITA KELLING** (she/her)

**Sound Designer**

**Park Square** *Diary of Anne Frank, Might As Well Be Dead*, With Girl Friday Productions: *Idiot's Delight; The Snow Queen, Murder for Two, Shooting Star, The House on Mango Street, 33 Variations, The Red Box* **Representative Theatre** Six Points Theater: *Two Jews Walk Into A War*, Prime Productions: *The Roommate*, Stage North: *The King of the Kosher Grocers*, Artistry: *Tinker to Evers to Chance* **Training** BA Theatre Arts, University of Minnesota

**MIKAYLA PAUL** (she/her)

**Lighting Designer**

**Park Square** Debut **Representative Theatre** UMN Theatre Arts and Dance: *Silent Sky; Rare Diseases* **Training** B.A Theatre Arts: Technology and Design Track, emphasis in Lighting **More at** [mikaylampaul2001.wixsite.com/mysite](http://mikaylampaul2001.wixsite.com/mysite) [facebook.com/MikaylaLD](http://facebook.com/MikaylaLD)

**TYLER STAMM** (he/him)

**Properties Designer**

**Park Square** With Steppingstone Theatre: *Fly Guy* (as scenic painter) **Representative Theatre** Theatre Coup d'Etat: *The Pillowman*; Classical Actors Ensemble: *Romeo & Juliet* **Awards** The world's largest gnome at Adventures in Cardboard **Training** B.A. Theatre Arts, Viterbo University

**PETE TALBOT** (he/him)

**Puppet Designer**

**Park Square** *Skin of Our Teeth; Antigone* **Training** B.A. K-12 Art Edu., Johnson State. Add-Junk Professor, Cardboard Teck Instantute **More at** [www.pinbox3000.com](http://www.pinbox3000.com)

**AMM-RA SEKA**

**Pupper Designer**

**HANNAH MAHR** (they/them)

**Movement Director**

**Park Square** Debut **Relevant Experience** Young People's Theater Workshop: *Choreographer and Director*; SteppingStone Creative Learning;



*Teaching Artist*; Northfield Arts Guild:  
*Teaching Artist*; Merrill Arts Center:  
*Teaching Artist*; HIVE: An Interactive  
Play for Very Young Audiences:  
*Deviser and performer* Borealis Dance  
Theatre Company: *id. ego* (as company  
dancer and soloist), *The Night Before  
Christmas* (as company dancer)  
**Training** B.A. Theatre, minor in  
Dance, Gustavus Adolphus College  
Physical Theatre Semester Program,  
Accademia dell'Arte in Arezzo, Italy  
**More at** hannahmahr.com/

## **JAYA ROBILLARD** (she/her)

### **Stage Manager**

(as SM) *Antigone*, With Sandbox  
Theatre: *Big Money*, *Queens*; (as ASM)  
*Airness*, *Pride & Prejudice*, *Romeo &  
Juliet*, *A Midsummer Night's Dream*,  
*Cardboard Piano*, *Macbeth*, *Nina  
Simone*: *Four Women*, *The House  
on Mango Street* Representative  
Theatre Sandbox Theatre: *Words  
Do Move*; *Artistry Theater*: *Songs  
for a New World*; *Collide Theatrical  
Dance Co*: *Frankenstein*; *Theatre Mu*:  
*Peerless*; *20% Theatre Company*: *The  
Terror Fantastic Upcoming Projects*  
*MN Opera*: *The Daughter of the  
Regiment*, *The Song Poet*; *History  
Theatre*: *The Defeat of Jesse James*

## **OLIVIA NYMAN** *Assistant*

### **Stage Manager**

**Park Square** (as Sound Board  
Op) *The Humans*, *Holmes & Watson*  
**Representative Theatre** Macalester  
Mainstage: *Seph* (props/puppetry  
design); Macalester Outdoor Stage: *I'm  
Going to Go Back There Someday* (sound  
design) **TV/Film** *Hmong House* (set/props  
design) **Awards/Other** Ethics training  
with the Association for Practical and  
Applied Ethics (APPE) Intercollegiate  
Ethics Bowl; *Knighthood* **Training** B.A.,  
Theatre & Dance, Macalester College

## **PRODUCTION STAFF & CREW**

**Director of Production:** Meghan  
"Mac" McLaughlin

**Props:** Tyler Stamm and Pete Talbot

**Sceneic Charge Artist:** Jenni  
Raddatz-Tolifson

**Puppetry:** Pete Talbot, Amm-  
Ra Seka, and Tyler Stamm

**Run Crew:** Richard Granham,  
Meghan Kent

**Technical Director:** Austin Stiers

**Assistant Technical Director:**  
Garrett Conard

**Audio and Video Supervisor:**  
Richard Graham

**Sound Supervisor:** Richard Graham

**Wardrobe Supervisor:** Meghan Kent

\*Members of Actors' Equity Association, the Union of Professional Actors and Stage Managers in the United States. Actors' Equity Association (AEA) was founded in 1913 as the first of the American actor unions. Equity's mission is to advance, promote and foster the art of live theatre as an essential component of our society. Today, Equity represents more than 40,000 actors, singers, dancers and stage managers working in hundreds of theatres across the United States. Equity members are dedicated to working in the theatre as a profession, upholding the highest artistic standards. Equity negotiates wages and working conditions and provides a wide range of benefits including health and pension plans for its members. Through its agreement with Equity, this theatre has committed to the fair treatment of the actors and stage managers employed in this production. AEA is a member of the AFL-CIO and is affiliated with FIA, an international organization of performing arts unions. For information, visit [www.actorsequity.org](http://www.actorsequity.org).

## Our Contributors

### Special Thanks to the Historic Hamm Building

For their investment in the vibrant cultural life in downtown Saint Paul, a warm welcome to the new building owners, Halverson and Blaiser Group, LTD.

### Park Square Theatre Lead Funding Partners:



Hugh J. Andersen  
Foundation



The Anderlik  
Family Foundation

Harlan Boss Foundation  
for the Arts

Sarah J. Andersen Fund of the  
Hugh J. Andersen Foundation



John Larsen Family  
Foundation



Boss Foundation



The Shubert Foundation

Edelstein Family Foundation



The Fred C. and Katherine  
B. Andersen Foundation

Margaret H. and James E.  
Kelley Foundation

Willis Towers Watson

F. R. BIGELOW FOUNDATION

MCKNIGHT FOUNDATION



This activity is made possible by the voters of Minnesota through a Minnesota State Arts Board Operating Support grant, thanks to a legislative appropriation from the arts and culture heritage fund.

**WINTER  
& SPRING  
CLASSES**

**Registration Now Open!**

[steppingstonetheatre.org](http://steppingstonetheatre.org)

PARK SQUARE  
STEPPINGSTONE

## FOUNDERS SOCIETY - Planned Estate Gifts

The Founders Society recognizes individuals who have made a future gift to the Theatre through their wills or other estate plans. These gifts literally lay the foundation for the next generation of theatre goers – making each donor a founder of Park Square's future.

You don't need to be rich to leave a lasting legacy. You can provide for your heirs, gain important tax benefits, and even receive an income now by making a thoughtful planned gift.

Planned Gifts include: A Bequest in Your Will; Retained Life Estate; Gift of Retirement Plan Assets; Charitable Remainder Trust; Gift of Life Insurance Policy; Charitable Lead Trust; Charitable Gift Annuity

**For more information about planned gifts and their potential tax advantages, please contact Marcie Berg: 651.767.8486 | [berg@parksquaretheatre.org](mailto:berg@parksquaretheatre.org)**

Betty Anderlik+  
Anonymous  
Marcia Aubineau  
Robert Baker & Margo Mickelson  
John & Barbara Balfanz  
Corrie Ooms Beck  
Dennis Brennan & Dan Bundy  
Steven Lockwood & Richard Cook  
Margaret Durham  
Mary Ebert & Paul Stembler  
Dianne & Jim Falteisek  
Nancy Feldman  
Hilde & John Flynn  
John Gillen In Memory of  
Lawrence E Pierson

Jewelie Grape  
The John W. Harris Family  
Sheila Henderson+  
Dennis & Mary Kelly  
William & Janice Kimes  
Jack & Jeanne Matlock  
Sue McAllister  
Dick Morrison+  
Ronald Parker & Janet Houck  
Michael-Jon Pease &  
Christopher Taykalo  
James Persoon &  
Barbara Schmidt Persoon  
Scott T & Jennifer Norris Peterson  
Mackenzie & Steve Romenesko

Susan Rostkoski  
Mr. Ken Rothchild  
Berneen Rudolph  
Paul & Pat Sackett  
Laurie Simon+  
Joan T. Smith+  
Sarah Stevenson in Memory of  
Gary Berggren  
Doris Swenson+  
Randall & Cynthia Thoen  
John & Sandra White  
Kate Wolfe-Jenson & Ralph Jenson

(+ - in remembrance)

## INDIVIDUAL GIVING

### 30+ Years of Giving:

Howard Ansel  
David E. Feinberg  
Benedict & Rita Olk  
Sigrid Johnson  
Scott T & Jennifer Norris Peterson  
Janice Kimes  
Thomas & Nancy Rohde

### 25-29 Years Giving:

The Crabb Family, Ken,  
Gwen, Casey & Rachael  
Margaret Osborne  
James Rustad & Kay Thomas  
Hilde & John Flynn  
Michael & Carol Garbisch  
Jenifer Wagner & James Vogel  
Richard & Joan Newmark  
Paul & Pat Sackett

### 20-24 Years Giving:

Edward Fox & Lori Belair  
Donald & Mary Ellen Olson  
Mr. Ken Rothchild  
Peter Maye & Betsy Cobb  
Elizabeth Docherty  
Margaret Michaelson  
Summer Seidenkranz  
& Clark Schroeder  
John & Sandra White  
Caroline Foster & H Dutton Foster  
John & Jeanne Lefevre  
Janice & Louis Leichter  
Eric & JoAnn Pasternack

Jeanne Corwin  
Trudy Dunham  
Nancy Feldman  
Mary A. Jones  
Gerald & Beth Voermans  
Helen Wagner  
Elizabeth Andrews  
James & Kathy Andrews  
Laura Cochrane  
Susan Flynn  
Thomas Gifford & Jean Heidenreich  
Robyn Hansen  
Wesley & Deirdre Kramer  
Ruth Ladwig  
Richard & Marina Morey  
Jack & Judy Schlukebier  
John & Nan Steger

### 15-19 Years Giving:

Anonymous  
Linda Boss  
Cathryn & Robert Burrell  
C.C. & Dawn Clawson  
Mary Dawson  
Jack & Jeanne Matlock  
Kathleen McLeod & Eric Hepp  
Sarah Stevenson in Memory  
of Gary Berggren  
John Sullivan  
Rolf & Christi Bolstad  
Burle & Louetta Gengenbach  
Michael Mallory & Catherine Gray  
Laurel Severson  
Tim & Sara Beckstrand  
Wendy Lane & Judith Fairbrother  
John & Karen Larsen

Mary Ann Ogden  
Bruce A. Lilly & Paula Schad Lilly  
Charity Tahmaseb  
Wendy Worner  
Jane Carlstrom & Dave Decker  
John Fisch & Judith Halabrin  
Mary Jacobs  
Alfred & Sharon Kauth  
Thomas & Mary Krick  
Robert & Barbara Kueppers  
Laura McCarten  
Laurie Rose Simon &  
Carol Hohenstein  
Peg & Doug Wangenstein  
Robert Baker & Margo Mickelson  
Joan & Arnold Feinberg  
Annmary & Jim Herther  
Jeff & Kathy Johnson  
Bruce Jones & Joann Nordin

### 10-14 Years Giving:

Suzanne Ammerman  
Jane Helmke & Teresa Sterns  
Carol & Joseph Incremona  
Mike & Lorinda Jackson  
Art Kaemmer  
Thomas Kleinschmit & Liana Magee  
David & Karen Minge  
Theresa Mish  
Rosanne Nathanson  
Michael-Jon Pease &  
Christopher Taykalo  
Catherine & Ferrol Robinson  
William Zimmermann  
Marcia J. Aubineau  
Lynne Beck

*Support from Individuals giving \$100 and above between September 1, 2021 and August 31, 2022"*

## *Individual Giving*

Paul & Tina Casey  
Barb Davis  
Carol Freeman  
Tom & Kristy Griep  
Suzanne Jebe  
Patricia Mitchell  
Ronald Parker & Janet Houck  
Chuck & Terri Roehrick  
Rebecca Shockley  
Kay A. Thomas  
Frank & Barbara Abramson  
William Anderson  
David Freier  
Nancy Jones  
Sara Kuether  
Bev Montgomery  
Susan Reese  
George Skinner & Anne Hanley  
Michael & Sherry Spence  
Stanley & Connie Suchta  
Andrea Trimble Hart  
Nell Ytsma & Mark Sauer  
Arnold & Judith Brier  
Terri Cavanaugh  
Jonathan T Desportes-Tourdot  
Howard Fink & Stephanie Bell  
Jennifer Gross  
The John W. Harris Family  
William & Linda Holley  
James & Gail Lafave  
Gayle & Timothy Ober  
Russell & Kathryn Rhode  
Connie & Wally Shaver  
Bob Thompson  
Dale & Judy Tucker  
Dale & Judy Tucker  
Rick & Barbara Whiting  
Jeanne & Richard Lemberger  
Kay Robinson  
Susan Rostkoski  
Miriam & James Stake  
Keith Thorkelson  
Georgia Wegner  
Terry & Susan Wolkerstorfer  
Sheri Zigan

### **5-9 Years Giving:**

Janet Albers  
Robert & Mary Beck  
Pam & Mark Bintzler  
Mary Ebert & Paul Stembler  
Dianne & Jim Falteisek  
Robert & Becky Glesne  
David & Ann Heider  
Todd & Mary Jacobson  
Laurel Krause & Ross Collins  
Mary Martin  
Paul & Tara Mattessich  
Sharon Radman  
Jane Schmidt  
Emily & Dan Shapiro  
Mary Wingfield  
Burdick Family Fund  
David & Michelle Christianson  
Michael & Sharon Conley  
Casey & Rachael Crabb  
Fran Davis  
Jewelie Grape

Jim & Judy Haigh  
Patricia Koors  
Ms. Sharon Lewis  
Nancy & Kevin Rhein  
Ute & Chuck Buehler  
David & Joan Ciminski  
Jay & Page Cowles  
Ferris Fletcher  
Jeffrey Hatcher  
Mary Kay Hicks  
John Jesmok  
Paul & Renee Johnson  
Kent & Diane Krueger  
Al Kvaal  
Cheryl Laurent  
Ken & Diana Lewis  
Elizabeth Martin  
Michael & Connie O'Sullivan  
John Orbison & Holly MacDonald  
Karna Peters & George Perez  
Brad & Linda Quarerer  
George & Janet Stevens  
Janet & Thomas Walker  
John Williams  
Jeanne Winiecki  
Francis Zebot & Nancy Wiggers  
Mary Beth Brody & Richard Crowell  
Lois Carolan & Ronald Marquis  
Steve Colton  
Jeffrey & Debra Erager  
Steven Euler & Nancy Roehr  
Jerri & Dan Freier  
Beth Iseminger  
Michael Kruempel  
David & Pamela Lande  
Catherine Loye  
Steve & Rita Mattaini  
Pondie Nicholson Taylor  
& Mark Taylor  
Richard Osborn  
Anton Rang  
Scott Roste  
Stephen & Dana Strand  
Robert Warde  
Michael & Martha Willett  
Herbert & Lynne Benz  
Faith Clover  
Rita Dibble  
Ann Jalonen  
Pamela & Doug Johnson  
Charles Keyes  
Joseph & Kathy Kovarik  
Susan Maples  
Ron & Mary Mattson  
John Moulder  
Dean & Rita Nelson  
Carol Perkins  
Michele Ione Pierce  
Trudy Richter & Alan Kamrath  
Greg & Dianne Robinson  
Annemarie Solon  
Daniel & Jennifer Tenenbaum  
Ella Thayer  
David & Rita Thofern

### **1-4 Years Giving**

Karen Asphaug & John Anderson  
Vicki Barnes  
Joan & George Bohlig  
Paula J. Denman  
Nickie & Dennis Dillon  
George Ferguson  
Rosemary Graham  
Pamella & Rick Jacobson  
Robert Leonard  
Nancy Mosier  
Eugene Piccolo  
Joseph Robillard  
Alan & Sally Ruvelson  
Dawn Selle & George Gershon  
Len Shelhamer  
Christine Soderling  
Pondie Taylor  
Larry Valley & Marie Nollette  
Steve & Kathy Wellington  
Todd Zaun  
M Abbott  
Sarah Andersen  
Jan Brundige & Karen Garvin  
Burt & Rusty Cohen  
Roxann Cunningham  
Mary Dew & David Miller  
Debbie Ferry  
Karen Grabow & Keith Halperin  
Cynthia Hall-Duran  
Jarilyn Hamness  
Annette Hansen  
Hanna Hill  
Shannon Hoagland  
Pam & Jeremiah Kearney  
Ed Kegle  
Duane Kelling  
Janie Labree  
Joy & Randy Nelson  
Jerry Patten  
Pam Pontzer  
Jonathan Riehle  
Mike Ring & Flannery Clark  
John Romano  
Kent Severson  
Marcia Sullivan  
Mr. Doug Tiede  
Michael Wirth-Davis  
Stephen & Kimberly Wolff  
Bruce Wynkoop  
Sarah J. Andersen  
James Bauer  
Al Bradley  
Estelle Brouwer  
Becky & Jim Cooke  
Amy Dauplaise  
Diana Fingar  
Ms. Bridget Fitzgerald  
Jim & Cheryl Gelbmann  
Mary Hanks  
Jo-Ida C Hansen  
Mark Hauck & Timothy Ferraro  
Sandra & Mark Howlett  
Helen Mary Hughesdon  
Mary McLaughlin  
Rebecca Menken  
Ruth Mickelsen  
Maggie Moris & Kent Kokko



John & Melissa Mulloy  
George & Judy Murakami  
Beatrice & Richard Murray  
Rena Oswald-Anderson  
Barbara Owens  
Patricia Rogin-Pearson  
Susan Schaeffer  
John & Elizabeth Sebastian  
Brien Slawik  
Gregory Sullivan  
Robert W. Thompson  
Shwetha Vijayakumar  
Rebecca Wade  
Emily Williams  
Le Donna Wistrick  
Jeannie Worner  
Miriam Zachary  
Emily Ahachich  
Ryan Family Donor Advised Fund

Marcie Berg  
Karen & Tom Billigmeier  
Kim Bingham  
Catherine Carter  
Julie Chu  
Mary Clysdale  
Jane Delage  
Dawn & Mike Erlandson  
Stephen Gronewold  
Cathleen Boss Gruen  
Lisa Heidenreich  
M.J. Horner  
Judy & Lee Houck  
F Emil Jalonen  
Dolores Johnson  
Rebecca Kahl  
Gordan Kepner  
Anthony Kiropes  
Bill Laughlin

Moses Lee  
Heather Logelin  
Jean Lubke  
Jerry McDonald  
Pam Mortenson  
David & Karen Olson  
Gail Olson  
Noreen Olson  
Greg Owen  
Kristin & Davis Parker  
Shelli Place & Michael Shann  
Patrick Reardon  
Sandra Rufer  
David & Ann Smith  
Sara Tollefson Currell  
& Daniel Currell  
Michelle Tucker  
Sonja Walker  
Troy & Carla Walsh  
Shelley Wies

## Our Commitment to Sensory-Friendly Access

*The Snowy Day* – December 10th

### What does a Sensory Friendly Performance include?

- Bringing up house lights to 30%
- Lowering the sound to no more than 90 decibels
- Eliminating flashing lights and strobe
- Providing sensory fidgets and ear protection

Learn More: [parksquaretheatre.org/your-visit/access/](http://parksquaretheatre.org/your-visit/access/)



**TICKETS ON  
SALE NOW!**

*An assassin, a spy, a  
playwright, and of  
course, Marie Antoinette!*

# THE REVOLUTIONISTS

By Lauren Gunderson

**MAR 29 – APR 16**

# **Park Square Theatre Information**

## **STAFF**

Mark Ferraro-Hauck  
*Executive Director*

### **Artistic**

Ansa Akyea  
*Artistic Associate*

Ellen Fenster  
*Artistic Associate*

Mark Ferraro-Hauck  
*Artistic Associate*

Rick Shiomi  
*Artistic Associate*

William Edson  
*Company Manager*

### **Production**

Meghan "Mac" McLaughlin  
*Director of Production*

Austin Stiers  
*Technical Director*

Garrett Conard  
*Assistant Technical Director*

Brent Anderson  
*Electrician Supervisor*

Alexi Carlson  
*Assistant Electrician Supervisor*

Richard Graham  
*Sound Supervisor*

Meghan Kent  
*Costume Supervisor*

Erin Gustafson  
*Carpenter Supervisor*

Jeni Raddatz Tolifson  
*Scenic Paint Charge*

Nina Broberg  
*Production Intern*

### **SteppingStone Creative Learning**

Megan Flød Johnson  
*Interim Director of Education*

Erin Granger  
*Classes and Camps Program Manager*

Morgan Gray  
*Registrar and School Program Coordinator*

Hannah Mahr  
*Education Program Coordinator*

**Teaching Artists:** Ansa Akyea, Pedro Bayón, Alessandra Bongiardina, Jack Bonko, Abigail Chagolla, Laurie Dehmlow, Isabella Dunsieith, Kristin Fox, Jane Froiland, Dominique Jones, Clay Man Soo, Sylvia Michels, Mikaela Moe, Shae Palic, Aaron Preusse, Dominic Rodgers, Taj Ruler, Doug Scholz Carlson, Jen Scott, Kiyoko Sims, Alli St. John, Dane Stauffer, Kiera Stegall, Terrell Woods

### **External Relations**

Emily Halstead  
*External Relations Director*

Taylor Rowekamp  
*Marketing & Communications Manager*

Victoria Dobias  
*Marketing & Design Lead*

Marcie Berg  
*Development Manager*

Lynne Beck  
*Development Consultant*

Shelley Johnson  
*Webmaster*

Mike Hanisch  
*Videographer*

Dan Norman, Tomas Leal  
*Photographers*

Ben Cook-Feltz  
*Box Office Manager*

Jiffy Kunik  
*Performance Manager*

Emma Swain  
*Ticketing Associate*

### **Front of House Staff:**

Mariah Christensen, Claire Chwalek, Charlotte Deranek, Lauren Everett, Eva Gemlo, Robby Miller,

Alicia Pedersen, Steve Sell, Laura Topham, Tammie Weinfurtnr, Sophie Wozniak

### **Finance and Operations**

Christopher Taykalo  
*Interim Finance and Operations Director*

Amanda Hestwood  
*Internal Relations and Operations Manager*

Bethany Gladhill  
*Finance Consultant*

### **Access Services Staff**

Audio Description:  
Laurie Pape-Hadley, Laura Wiebers  
ASL: Terryann Nash, Theresa DuBois  
Open Captioning:  
Shelia Bland

### **Volunteers**

Susan Adix, Doreen Aszmus, Judy Bartlett, Sue Bjerke, Diane Blaiser, Carolyn Brown, Pat Dalluhn, Jo and Ernie Frankovich, Monica Fritzen, Lynn Harris, Nan Jahnke, Lucy and Rick Olsen, Pat Sackett, Anne Supplee

### **Thank you to all of our Volunteer Ushers.**

*Learn more about becoming a volunteer usher at [parksquaretheatre.org/contribute/volunteer](http://parksquaretheatre.org/contribute/volunteer)*

## Board of Directors

Dr. Paul Sackett (Chair)  
*University of Minnesota*

Pondie Taylor (Vice Chair)  
St. Paul City School

Shwetha Vijayakumar  
(Secretary)  
*Ecolab*

Andrea Trimble Hart  
(Treasurer)  
*Trimble Hart Consulting, Inc.*

Mike Erlandson (Past Chair)  
*Aurora Strategic Advisors*

Kristin Berger Parker  
*Stinson, Leonard, Street*

Tamra Davis Cownie  
*Hardenbergh Foundation*

Nancy Feldman  
*UCare, Retired*

Mark Howlett  
*3M*

Paul Johnson  
*Xcel Energy*

Jared Kemper  
*Schwan's Company*

Paul Mattessich  
*Wilder Research Foundation*

Susan Rostkoski  
*Consultant*

Paul Stembler  
*Consultant*

Anna Tobin  
*Greene Espel PLLP*

## Educator Advisory Board

Ben Carpenter  
*South High School*

Heather Klug  
*Park Center High School*

Jack Schluebier  
*Central High School, retired*

Jill Tammen  
*Hudson High School, retired*

Kate Schilling  
*Teacher & Designer*

Marcia Aubineau  
*University of St. Thomas, retired*

Tanya Sponholz  
*Prescott High School*

Theodore Fabel  
*South High School*

Lanka Liyanapathirana,  
*Educator*

Barbara Hynes-Tomczyk,  
*Educator and Freelance Director*

Adam Arnold,  
*MA, LMFT, LADC- Mental Health Professional*

*We are currently searching for educators to serve on the Educator Advisory Board. Learn more at [www.parksquaretheatre.org/education/advisory-board](http://www.parksquaretheatre.org/education/advisory-board)*

## Theatre Ambassadors

Keena Dietz,  
*Homeschool*

Elle Hinds,  
*Centennial High School*

Spencer Lilla,  
*Jefferson High School*

Iris Luz Hernandez,  
*Nova Classical Academy*

Kinsey Peterson,  
*Prescott High School*

Sam Wiesner,  
*Irondale High School*

Sydney Horsman,  
*Roseville Area High School*

---

## Contact Information & Ticket Office Hours

### Contact

#### Mailing Address:

408 St. Peter Street, Suite 110LL  
Saint Paul, MN 55102

#### Street Address:

20 West 7th Place  
Saint Paul, MN 55102

**Ticket Office:** 651.291.7005

[tickets@parksquaretheatre.org](mailto:tickets@parksquaretheatre.org)

**Education:** 651.291.9196

[education@parksquaretheatre.org](mailto:education@parksquaretheatre.org)

**Donor Development:** 651.767.8486

**Audience Services:** 651.767.8489

### Ticket Office Hours

#### Wednesday–Friday\*

12:00-5:00pm

\*Or by emailing [tickets@parksquaretheatre.org](mailto:tickets@parksquaretheatre.org)

### Performance Days

6:30-8:30pm for 7:30 evening performances

1:00-3:00pm for 2:00 matinee performances

*Hold times may be longer due to in-person customer service before performances*

Proscenium Stage seats 348. Andy Boss Thrust Stage seats 203.

The Historic Hamm Building is a smoke-free facility.

Latecomers are seated at the discretion of the House Manager.

Restrooms and water fountains are on the main floor and lower level.

Cameras/audio/video equipment and laser pointers are prohibited.



This activity is made possible by the voters of Minnesota through a Minnesota State Arts Board Operating Support grant, thanks to a legislative appropriation from the arts and culture heritage fund.



# BUNDLE & SAVE


with a 3-Show  
Choose-Your-Own Package

The 3-show package is still  
available to save big on the  
remaining shows this season!



Learn more at [parksquaretheatre.org](https://parksquaretheatre.org)

**PARK SQUARE THEATRE** **PRIME PRODUCTIONS**



An assassin, a spy, a playwright, and of course, Marie Antoinette!

## THE REVOLUTIONISTS

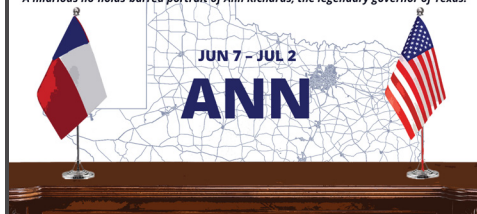
By Lauren Gunderson

**MAR 29 - APR 16**

A hilarious no-holds-barred portrait of Ann Richards, the legendary governor of Texas.

**JUN 7 - JUL 2**


## ANN



**MAY 24 - JUNE 18, 2023**

## BETWEEN RIVERSIDE AND CRAZY

Winner of the Pulitzer Prize - a rich comedy-drama about fatherhood and justice.



**P HOLMES  
I ROT**

**JUL 19 - AUG 20**

World premiere mystery!  
Not one but two of the  
greatest detectives of all  
time take the stage!

